

A Leading & Fastest Growing Firm...



FORMWORK & HEAVY FABRICATION

KAMAR
INFRASTRUCTURE PVT. LTD.

World's One Stop Foundation Shop

We Part of Making Beautiful World

KAMAR INFRASTRUCTURE PVT. LTD. is a leading and fast growing company of designing, supplying and fabricating Mild Steel Formwork to Infra projects as well expert in Heavy Fabrication work as per client's design such as Access Platform for Marine project, Steel plate girder, Jigs Fabrication Etc.

Established in 2005, as a sole proprietorship firm situated on 5 Acre area at Taloja in Navi-Mumbai. Kamar Infrastructure Pvt Ltd has created a niche of its own in the market. Owing to the vast industrial expertise, we have become highly proficient in our domain. We have come up as the most trusted manufacturer, exporter and supplier of dimensionally precise and functionally efficient range of drilling tools and other accessory equipment. With customization facility available, we have been able to satisfy our clients. Complying with international quality standards, we make use of high quality raw material and advanced technology in fabrication of our range.

We part of Making Beautiful World Quality & Prompt Service to the Customer are Values of Company.

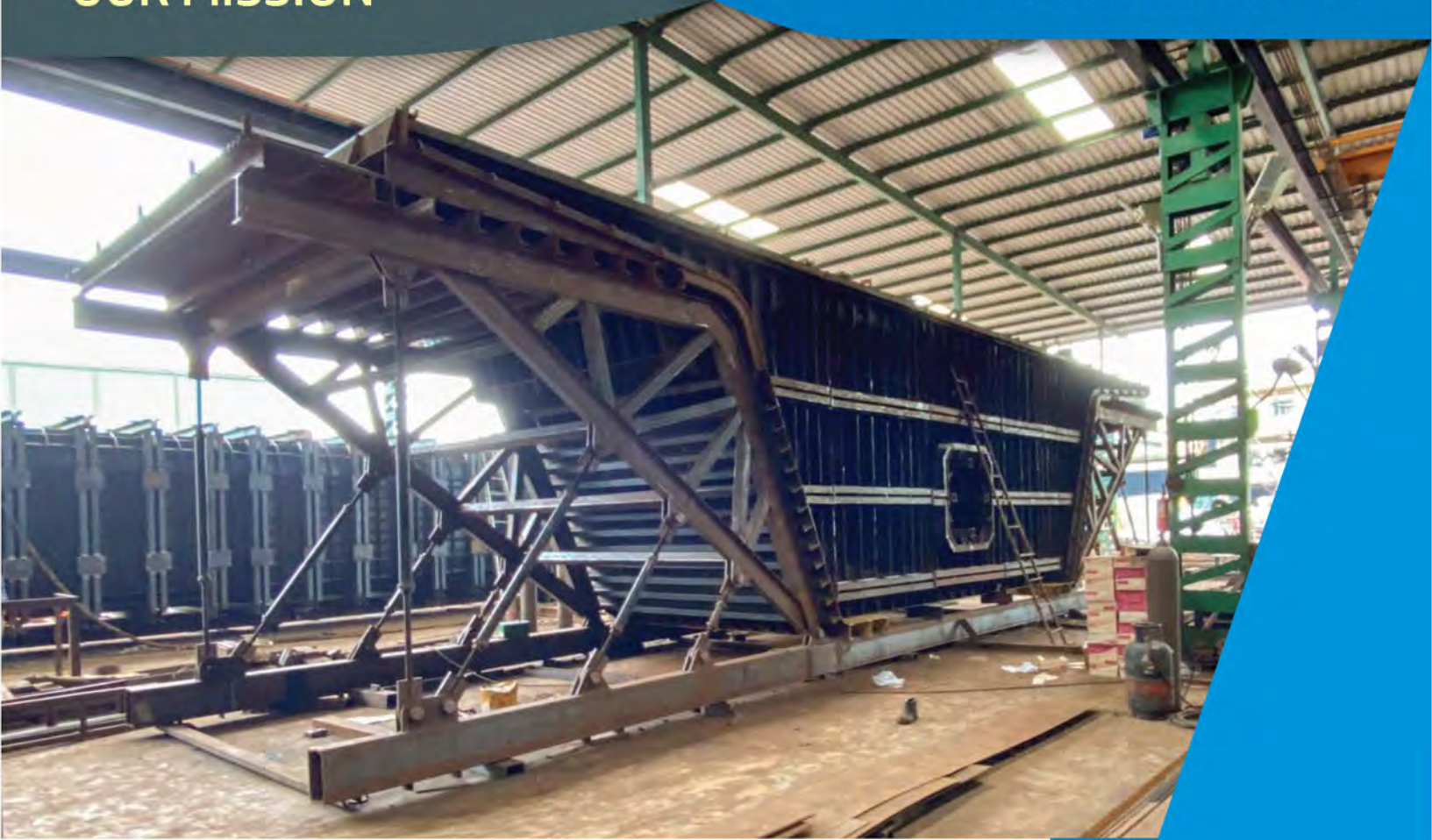
Capable to Provide All Solutions under One Roof. We would like to introduce our self as a Supplier of Mild Steel Formwork and scaffolding material.

We supply the fabricated material as per the client requirement with design development.



OUR MISSION

www.kamarformwork.com



To fulfill our mission, KAMAR Formworks aims to be a world-class group, known and highly respected, an attractive business partner for its clients.

The artisan origin of the company is a value and is ingrained in our culture. Indeed although a high level of automation and technical innovation continues, the principle of being innovative merges perfectly with the production of special customized elements that can be offered thanks to the tradition of handcrafted work.



MAKE IN INDIA philosophy is our must and our mission.



OUR EXPERTS DELIVER INNOVATIVE, EFFICIENT & VALUE-DRIVEN SOLUTIONS FOR CUSTOMERS

Our Technical Office provides a worldwide consultancy service, composed of personnel of wide experience and organizational skills, which guarantees a customized job for each client. Thanks to on-site sessions with technical and operating managers of the project, our engineers always find the best solutions with the most competitive product.

The Technical Office conducts preliminary surveys which enable them to provide accurate cost plans and further give special technical consulting during the construction phase in order to maintain the cost-efficiency mix.

For this purpose, KAMAR Formwork is able to develop a tailor-made job for each customer and determine the necessary equipment and thus optimize the use times, the logistics and the labor costs.

The technical office undertakes structural design and uses information technology systems such as 2D and 3D CAD, and other complimentary software for CAD, created especially for the design of structural steelwork. The calculations are made by professionals who correlate these programs to final products. The verifications conducted by their engineers are in full compliance with current regulations and all relevant ministerial decrees.



Kamar Infrastructure Pvt Ltd. offer following services for

FLYOVERS AND BRIDGES IN INFRASTRUCTURE

Formwork Design and Manufacturing

Kamar Infrastructure Pvt. Ltd. would like to introduce our self as a supplier of Mild Steel Formwork and Scaffolding material. We supply the fabricated material as per the client requirement with design development.

Formwork is a mould including all supporting structures, used to shape and support the concrete until it attains sufficient strength to carry its own weight.

It should be capable of carrying all imposed dead and live loads apart from its own weight.

We offer following type of steel formwork which we have divided into Precast and cast-in-situ.

Precast Formwork

- 1) Pier Cap
- 2) I Girder, T Girder,
Rectangular Girder Etc.
- 3) U-Girder
- 4) Segmented Long Line
- 5) Short Line
- 6) Precast Staircase Etc.

Cast - in - Situ

- 1) Pier
- 2) Pier Cap / Extended Pier Cap
- 3) Box Girder
- 4) Pier Arm / Pier Head
- 5) Portal Beam
- 6) Parapet Wall
- 7) Pier Anticrash Barrier





Manufacturing Process is carried out by the most up-to-date automated systems.

This allows coordination with technical partners at every level.

Automatic welding machinery guarantees constant high quality production.

The production cycle makes the following processes possible: Plasma cutting, shearing, Power Press bending, folding, perforating, assembly, welding, erection, painting & installation of products on site.

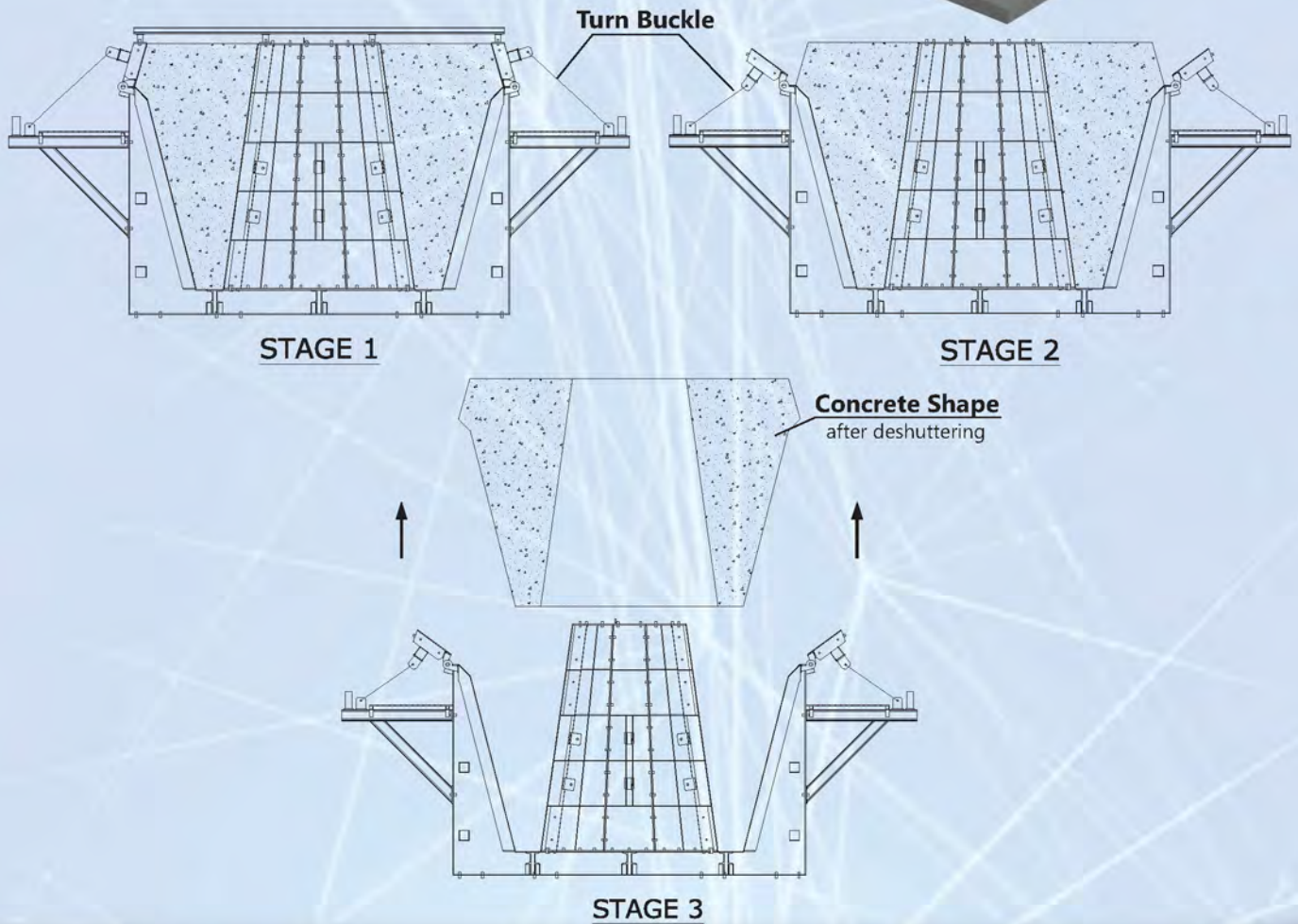
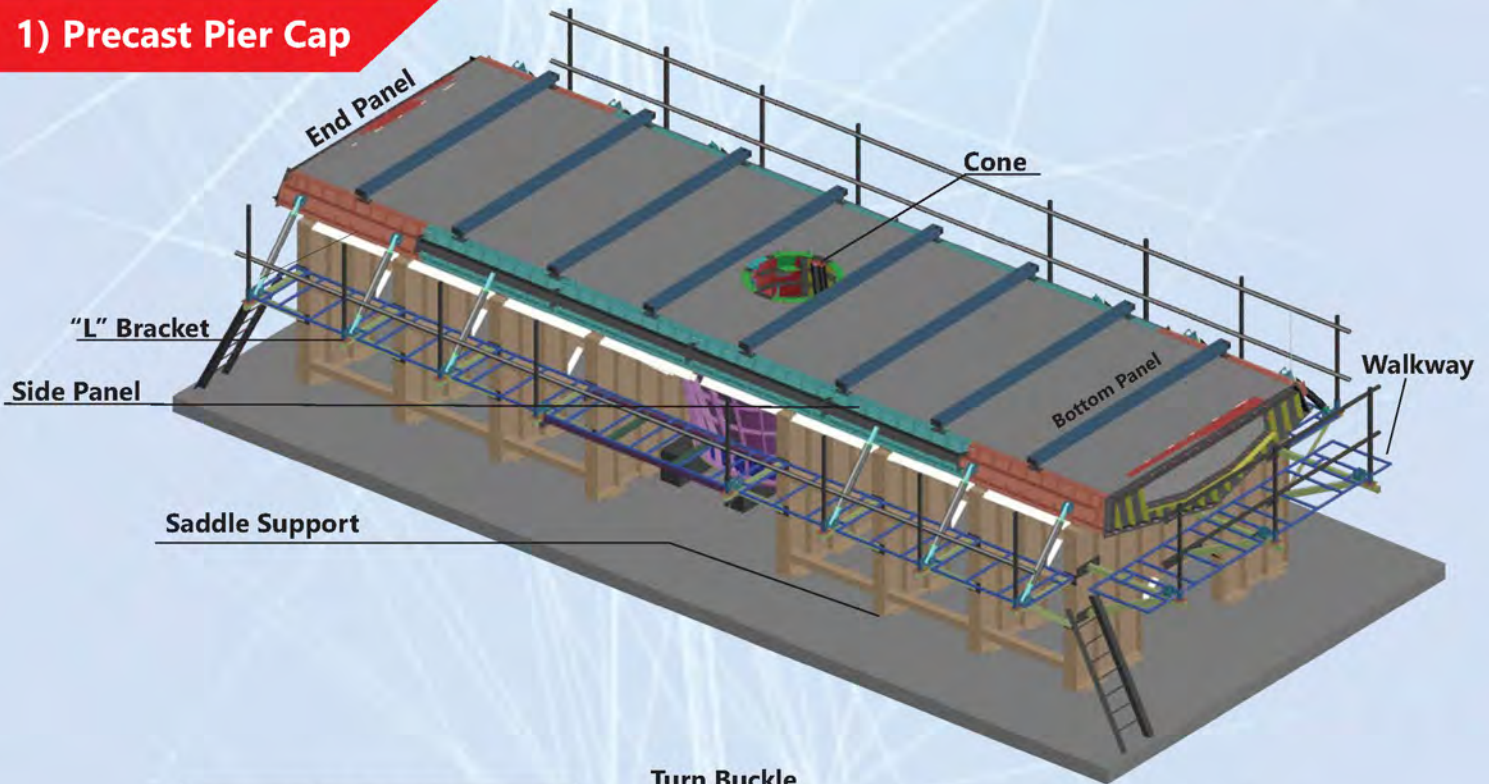


Covered Area - 1,00,000 Sq.Ft.
Built Up Area - 2,00,000 Sq.Ft.

Delhi Workshop

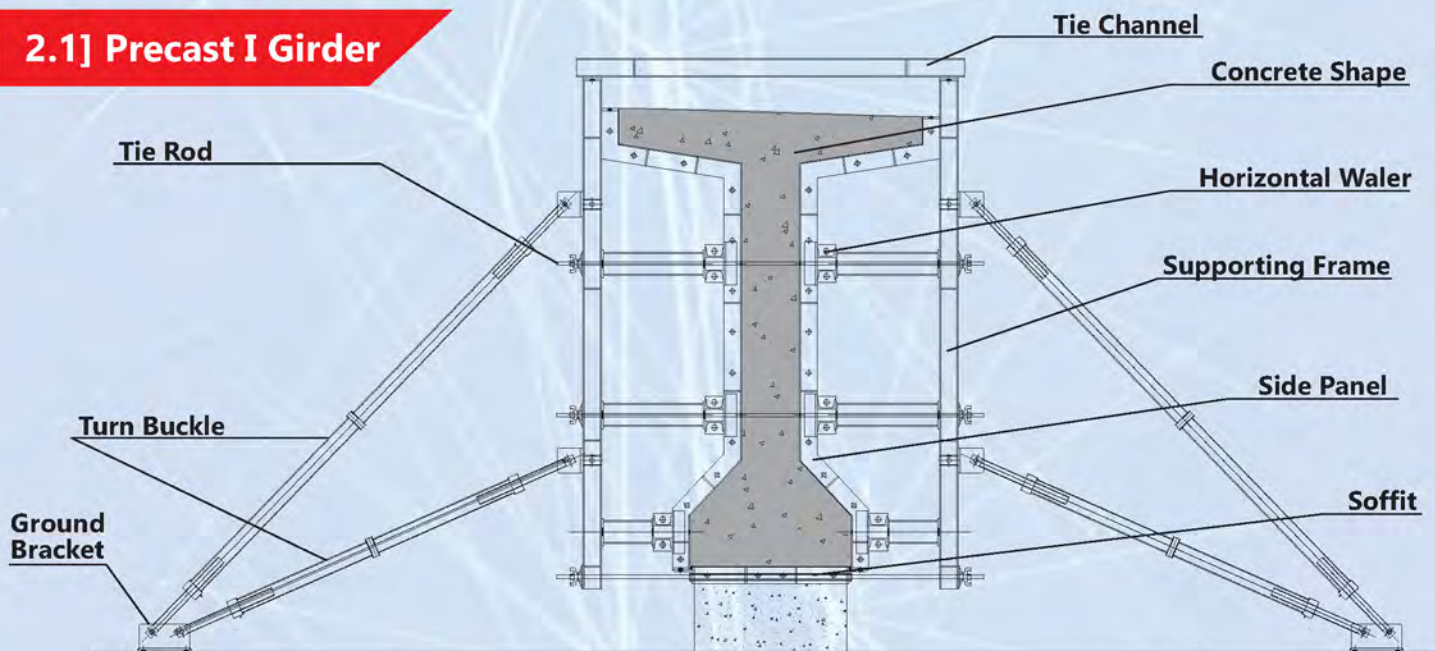


1) Precast Pier Cap

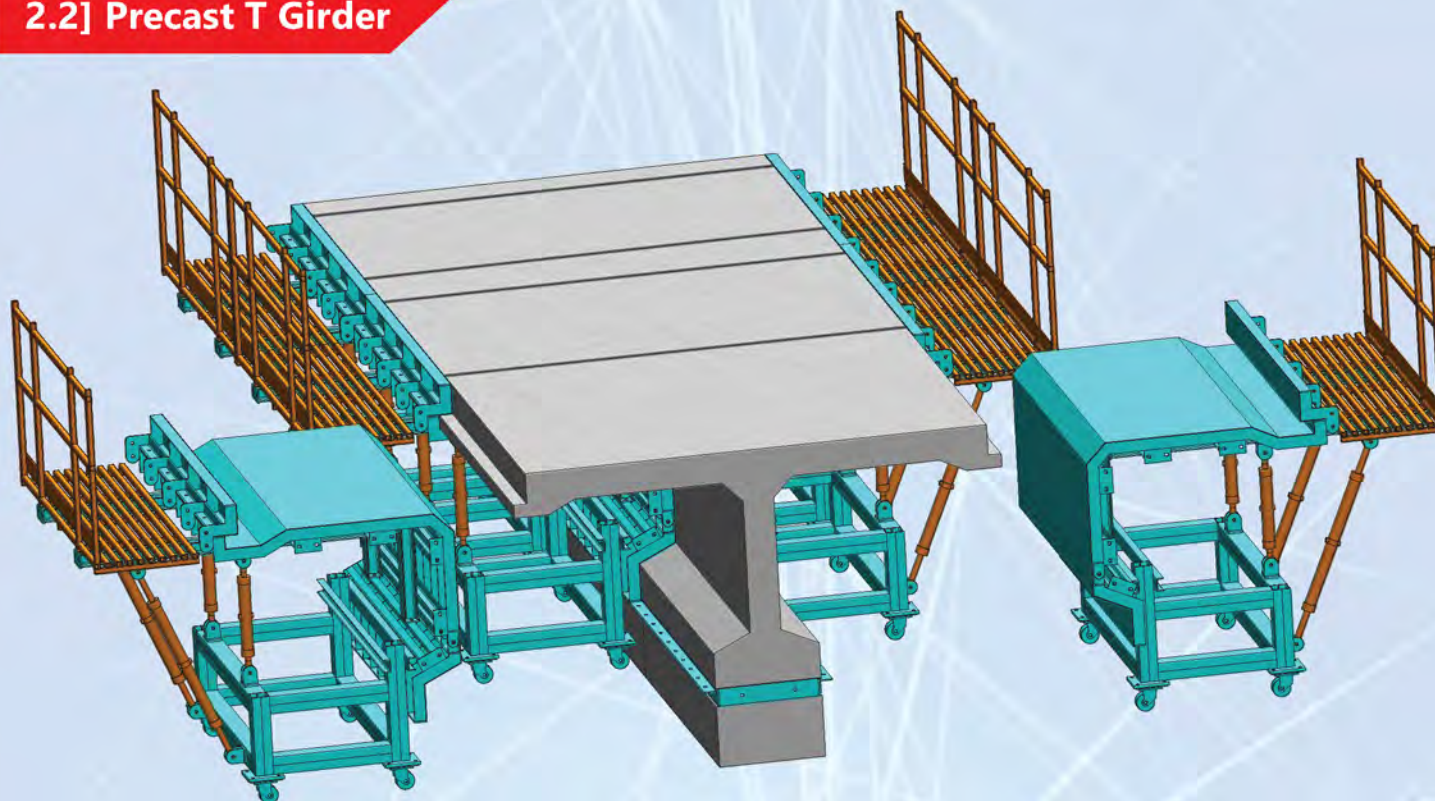


Such type of steel form of the prefabricated girder is the key to determining the quality of the girder. Therefore, in addition to having sufficient strength, rigidity and stability, the steel form itself must have a good structure, accurately installed and ingeniously removed, in order to better play the role of the steel formwork.

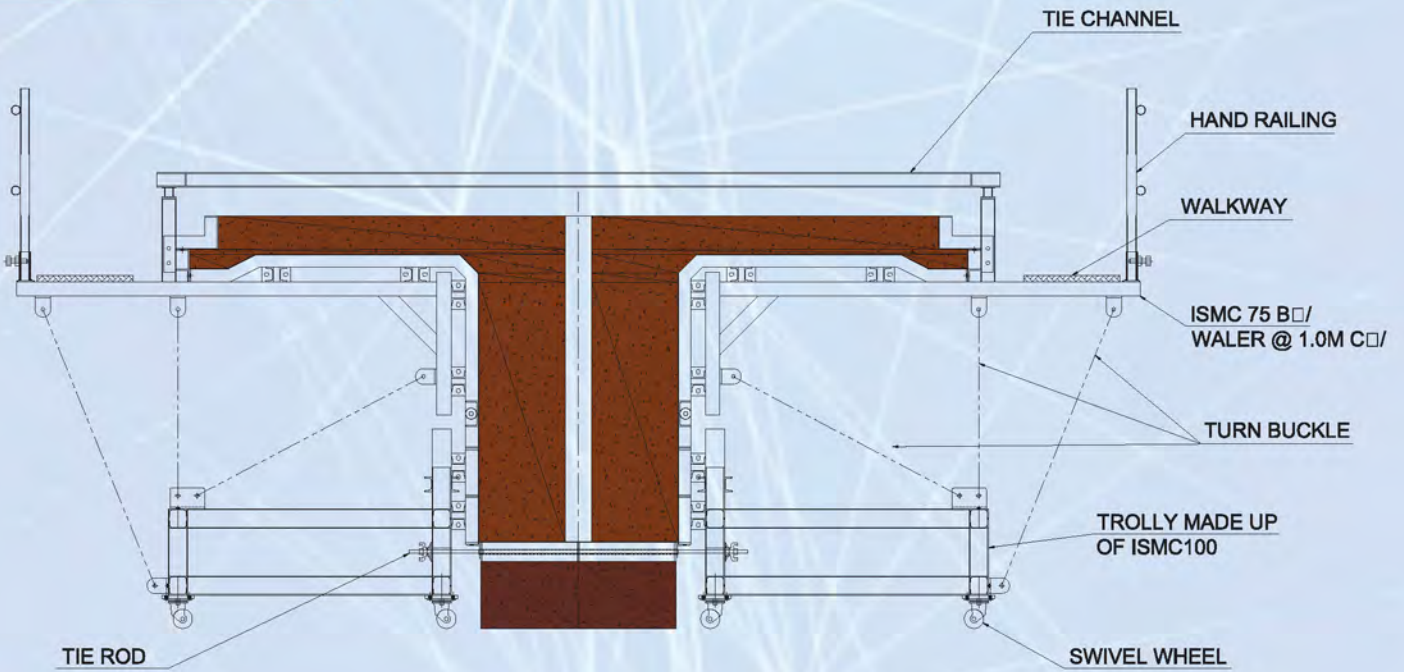
2.1] Precast I Girder



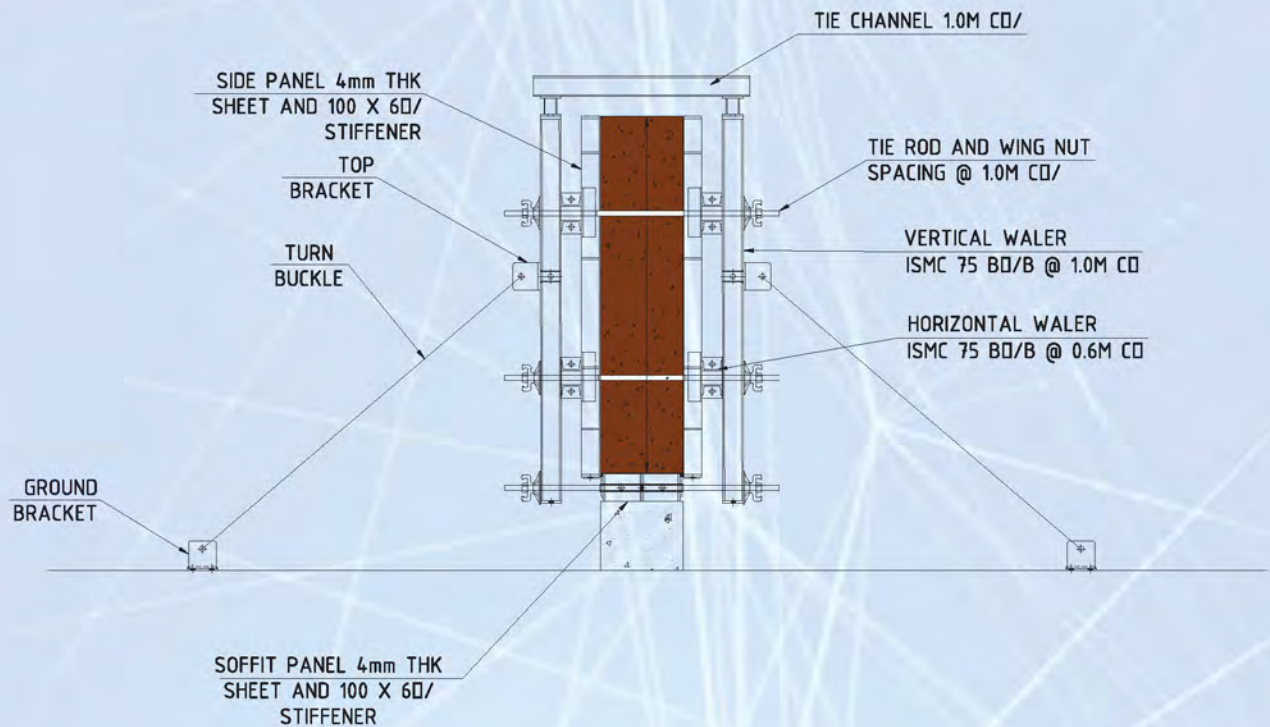
2.2] Precast T Girder



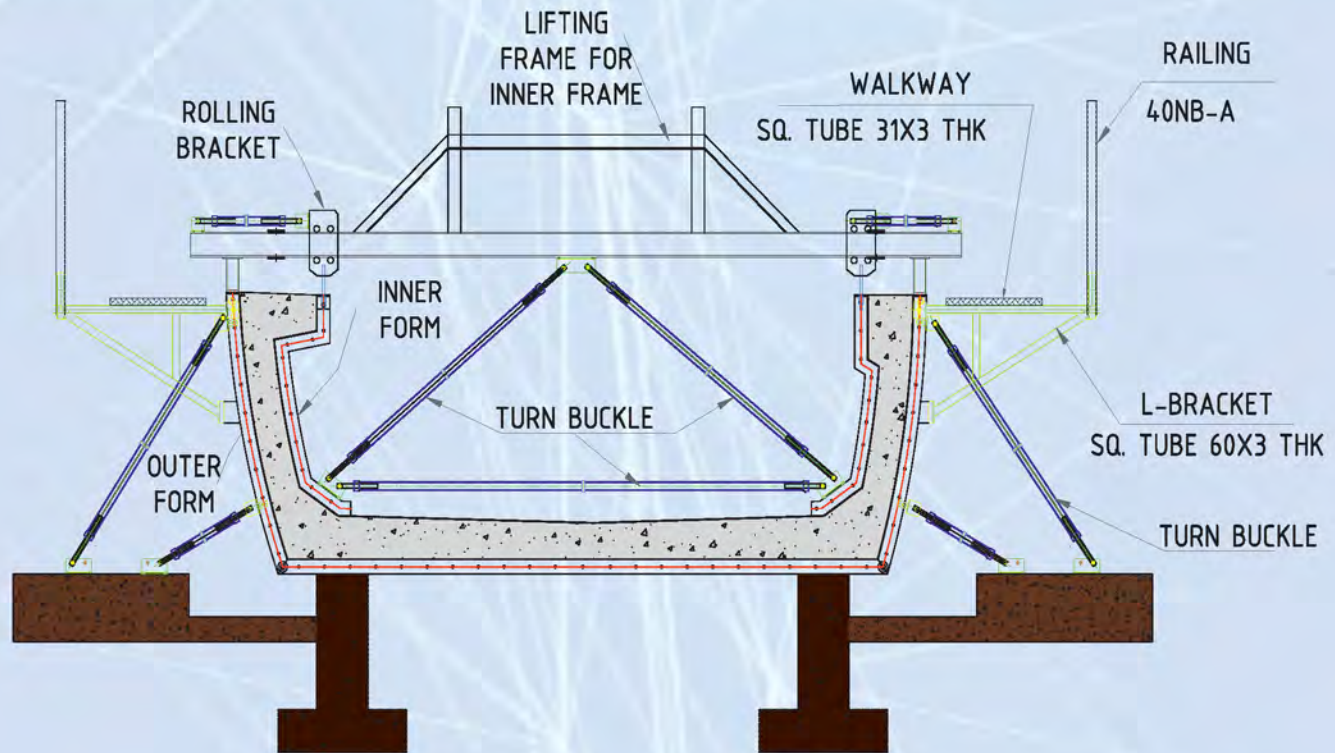
2.3] Precast L Girder



2.4] Precast Rectangular Girder



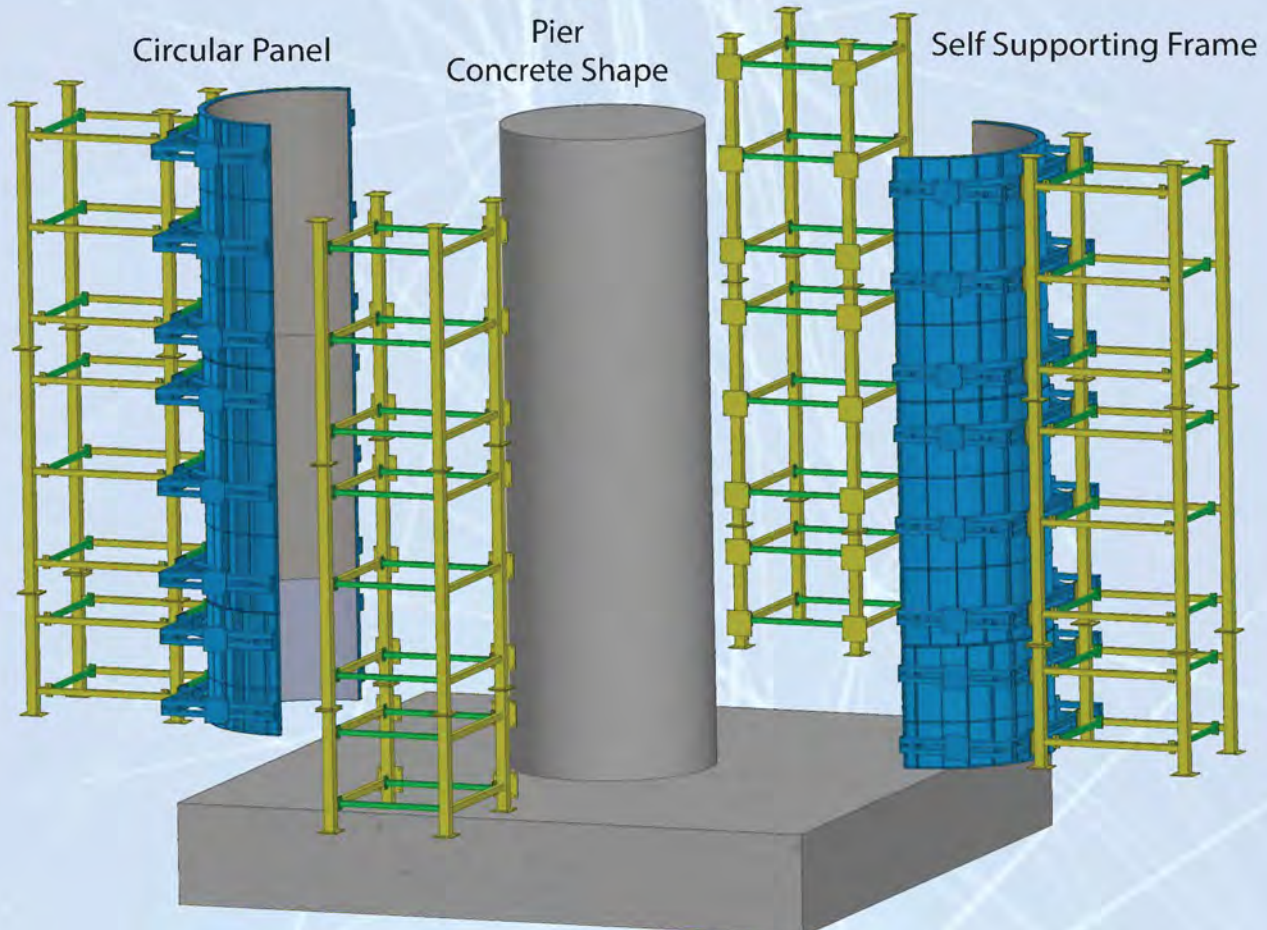
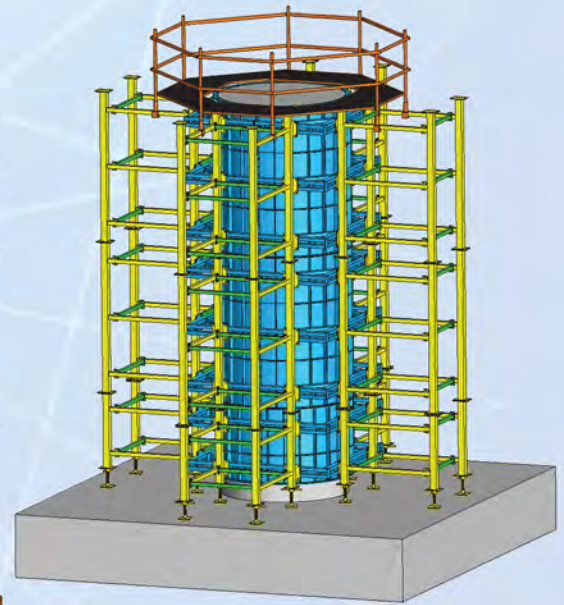
3] Precast U Girder



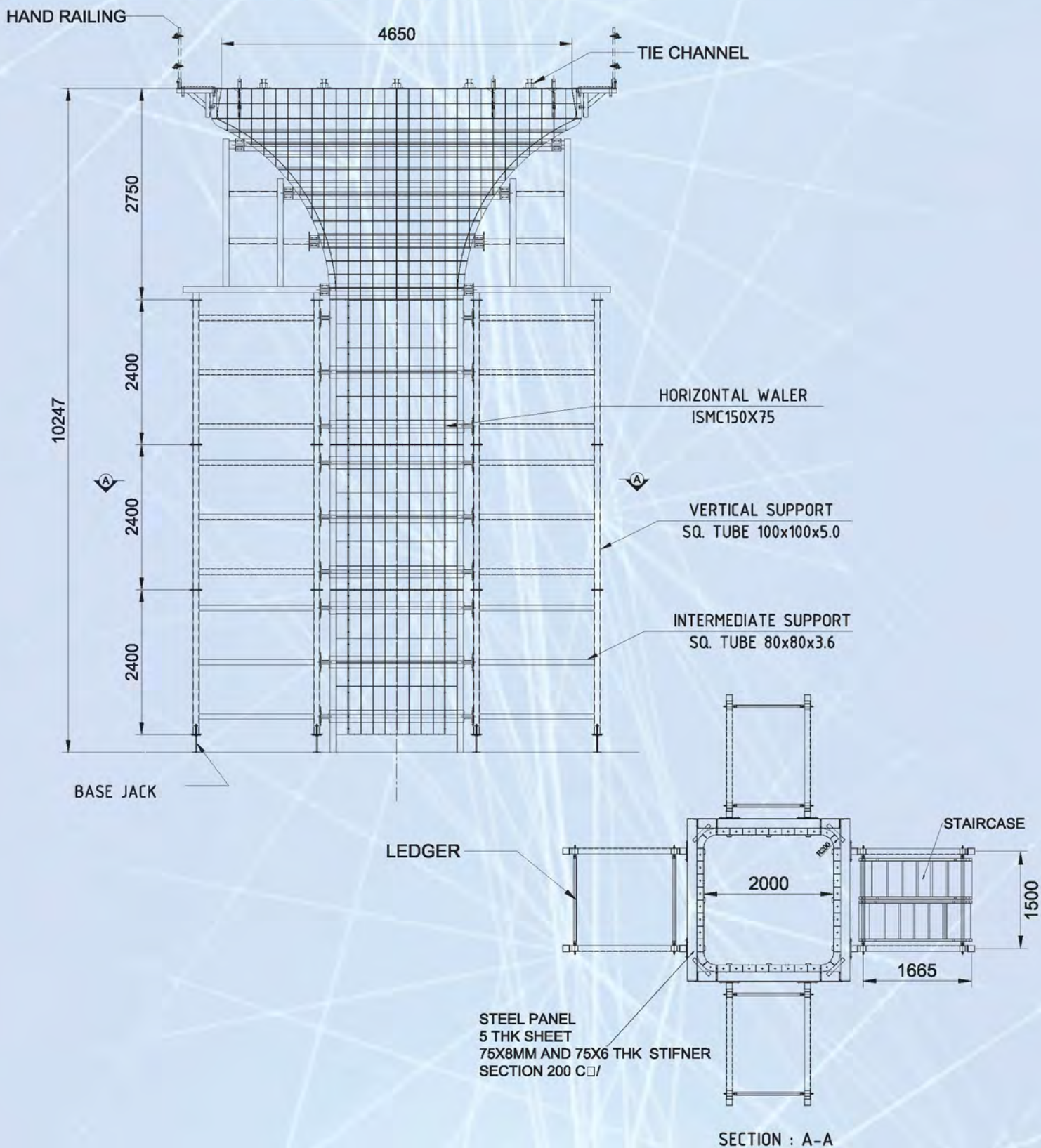
1. The outer form, bottom form, the inner and outer form clamping plates;
2. The inner form is fixed by the beam and the outer form, and the upper part is adjusted and fixed by the top screw; the inner form is integrated and supported by the hydraulic cylinder or turn buckle as per client requirement, which has high automation level, shortens the construction period and improves the construction efficiency. .
3. The outer form is connected with the ground hinge shaft, and the outer form is opened and closed by the support by turn buckle and the operation is simple, and the U Girder is greatly protected from being scraped when lifting the beam;
4. The outer form, the inner form and the soffit are sealed by rubber strips to ensure no slurry leakage;
5. The soffit design is in the form of wide bottom form plus an adjustment block. According to the difference of the line spacing, the adjustment block is used to adjust to meet the requirements of the U Girder prefabrication;
6. The vibrators are arranged at the inner and outer sides to improve the compactness and appearance quality of the concrete.

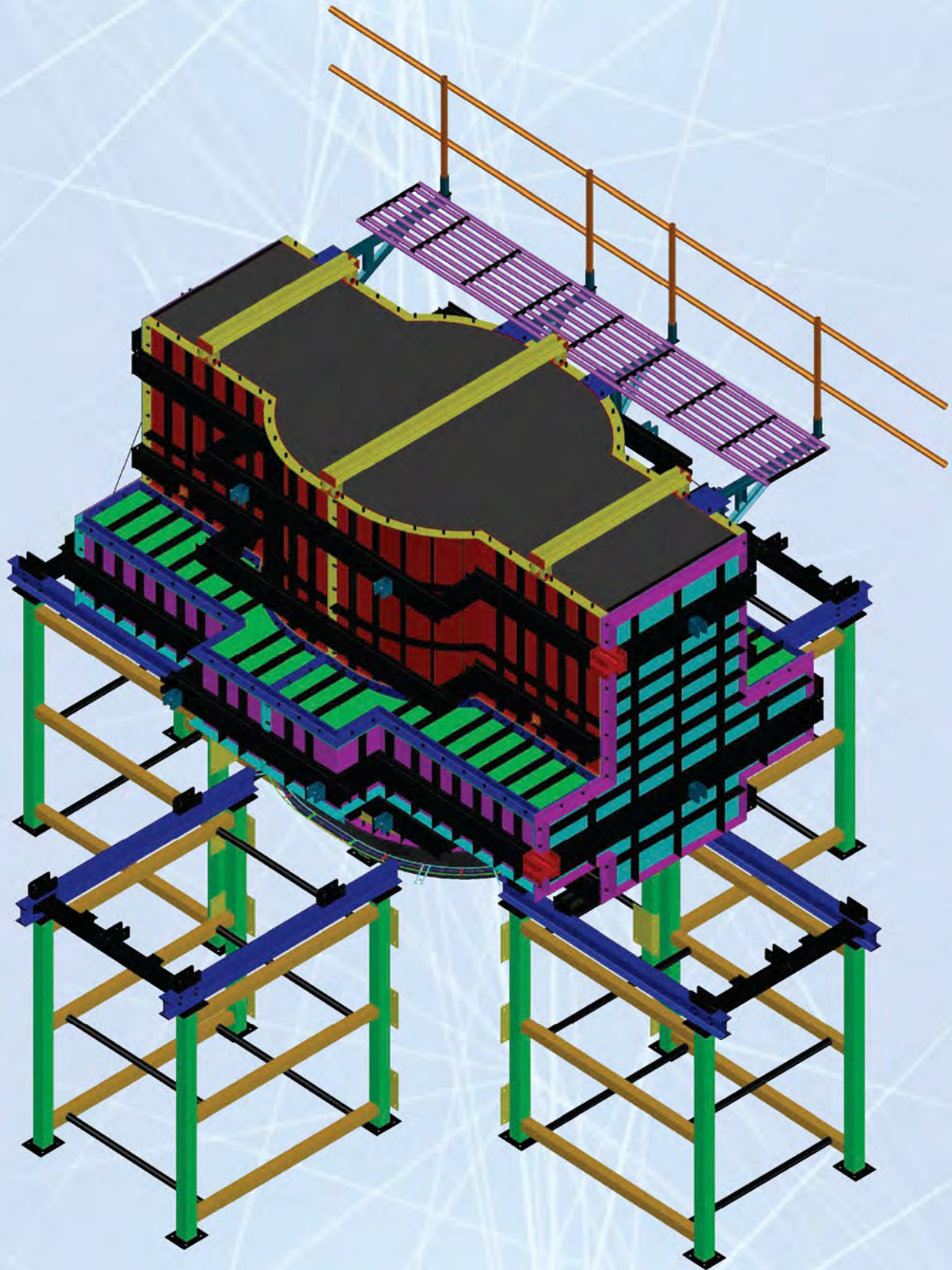
1] Circular Pier Formwork

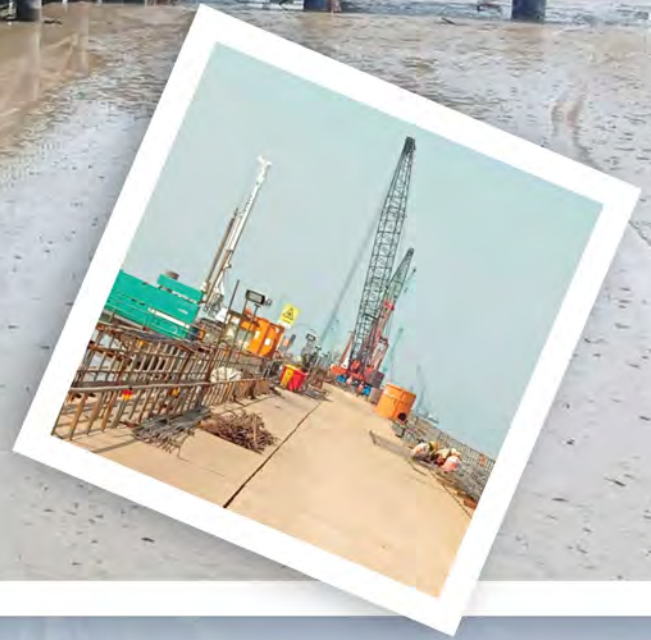
Pier formwork generally has cylindrical, round-end pier columns, tapered columns, Y-shaped columns, hyperbolic pier columns, vase columns, linear pier columns, V-shaped columns, rectangular pier columns, and the like. The pier column formwork is generally divided into two types: tie rod form and no tie rod form (including truss form); the pier cap is divided according to the shape of the upper and lower sections: upper circle lower circle, upper square lower circle, upper lower part square and upper round lower partsquare type.



2] Pier with Pier Cap







Access Platform - Heavy Fabrication

Fabrication, Supply & erection of Access Platform at DAEWOO-TATA, Mumbai Trans Hourbor Link Project Package - II (Maharashtra)

MARINE GANTRY

LAND GANTRY

CRANE MATTRESS

TRANSVERSE BEAM

LONGITUDINAL BRACING

TRANSVERSE BRACING

DOUBLER CAP (PILE CAP)

HEAVY FABRICATION

www.kamarformwork.com



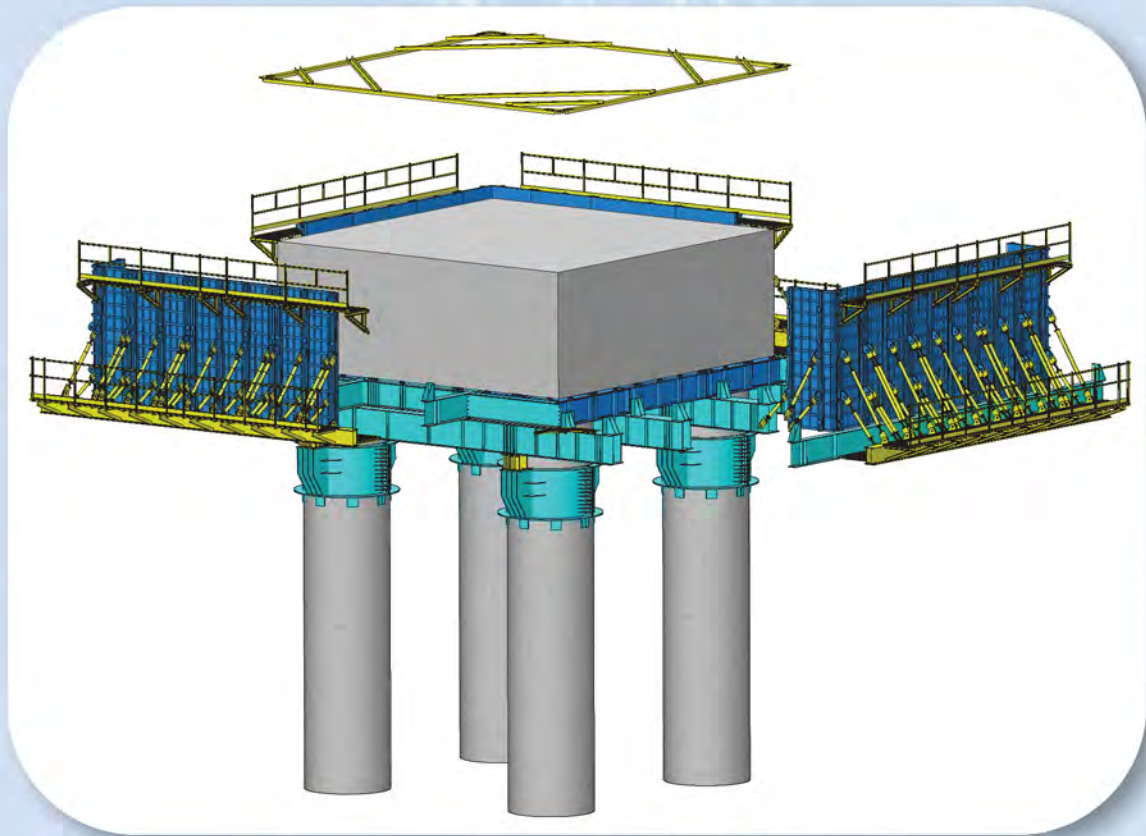
Access Platform - Heavy Fabrication

M/s. DAEWOO-TATA, MTHL Project, Navi Mumbai

Pile Cap Formwork with Supporting Structures - Heavy Fabrication



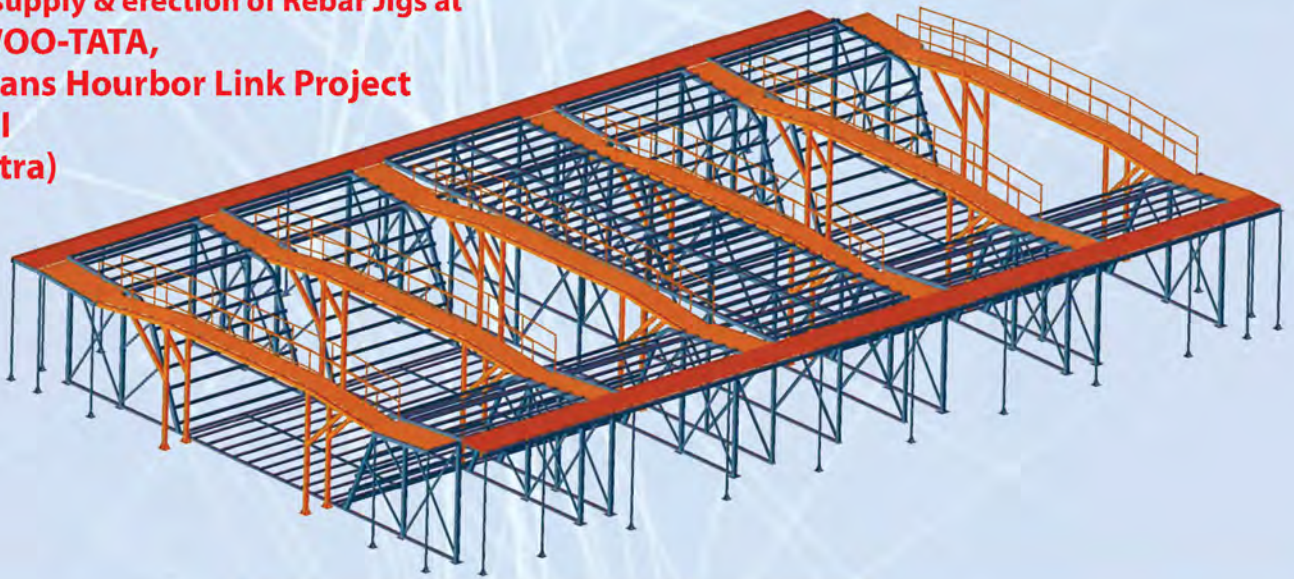
M/s. DAEWOO-TATA, MTHL Project, Navi Mumbai



Rebar Jigs - Heavy Fabrication

M/s. DAEWOO-TATA, MTHL Project, Navi Mumbai

Fabrication supply & erection of Rebar Jigs at
M/s. DAEWOO-TATA,
Mumbai Trans Hourbor Link Project
Package - II
(Maharashtra)



REBAR JIGS FABRICATION

REBAR JIG OUTER STRUCTURE - 04 nos./set

TROLLEY OF REBAR JIG - 02 nos./set

REBAR JIG SIDE WALKWAY(26 mtr. lg) - 02 nos./set

ADDITIONAL WALKWAY - 04 nos./set

PLATFORMS - 01 no./set



OUR PRESTIGIOUS CLIENTS

www.kamarformwork.com





HEAD OFFICE :

Kamar Estate, Devicha Pada,
Behind Deepak Nitrite Ltd.,
Taloja MIDC, Taluka : Panvel, Dist.: Raigad,
Maharashtra - 410 208. (INDIA)
Direct No : +91 22 - 2740 1462
Tel.: +91 22 - 2741 0766 / 2741 0768
Fax : +91 22 - 2740 1460 / 2740 1458
E-mail : formwork@kamargroup.com

CORPORATE OFFICE :

20, Husain Patel Marg, Mazgaon,
Mumbai - 10. (INDIA)
Tel.: +91 22 - 2377 6024 / 2371 1811
Fax : +91 22 - 2371 3708

DELHI WORKSHOP :

Main NH10, Near Rohad Toll Plaza,
Rohad Village, Distt. Jhajjar ,
Haryana -124506

MINAAM MULTANI
+91- 9821831097
minaam@kamargroup.com

MOHD. MUBEEN
+91- 99903 30130
mubeen@kamargroup.com